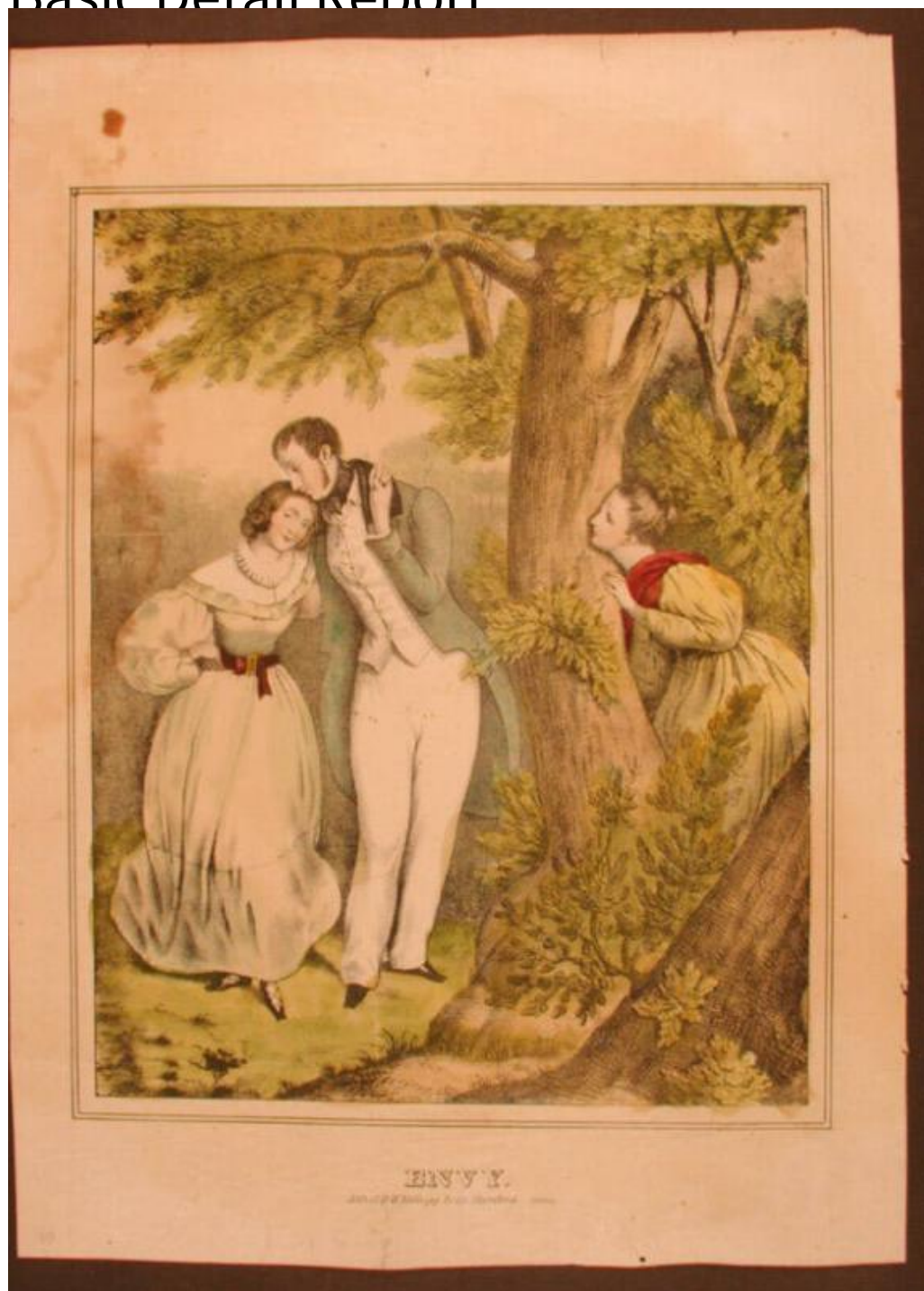


# Basic Detail Report



**Title Envy.**

Date 1830-1840

Primary Maker D. W. Kellogg & Co.

Medium Lithography; printer's ink and watercolor on wove paper

# Basic Detail Report

Description A young man and a woman hold hands as they walk along a path.

Her left hand rests on his left shoulder and is held in his left hand. Their right hands are clasped at her waist. She wears a dress with a sash and buckle and shoes with laces. He wears a coat, vest, necktie, and trousers. He has sideburns. Two buttons on his vest are unbuttoned. A second young woman looks on from behind a large tree at the right.

Dimensions Primary Dimensions (image height x width): 10 5/8 x 8 9/16in. (27 x 21.7cm) Sheet (height x width): 13 15/16 x 10 1/8in. (35.4 x 25.7cm)