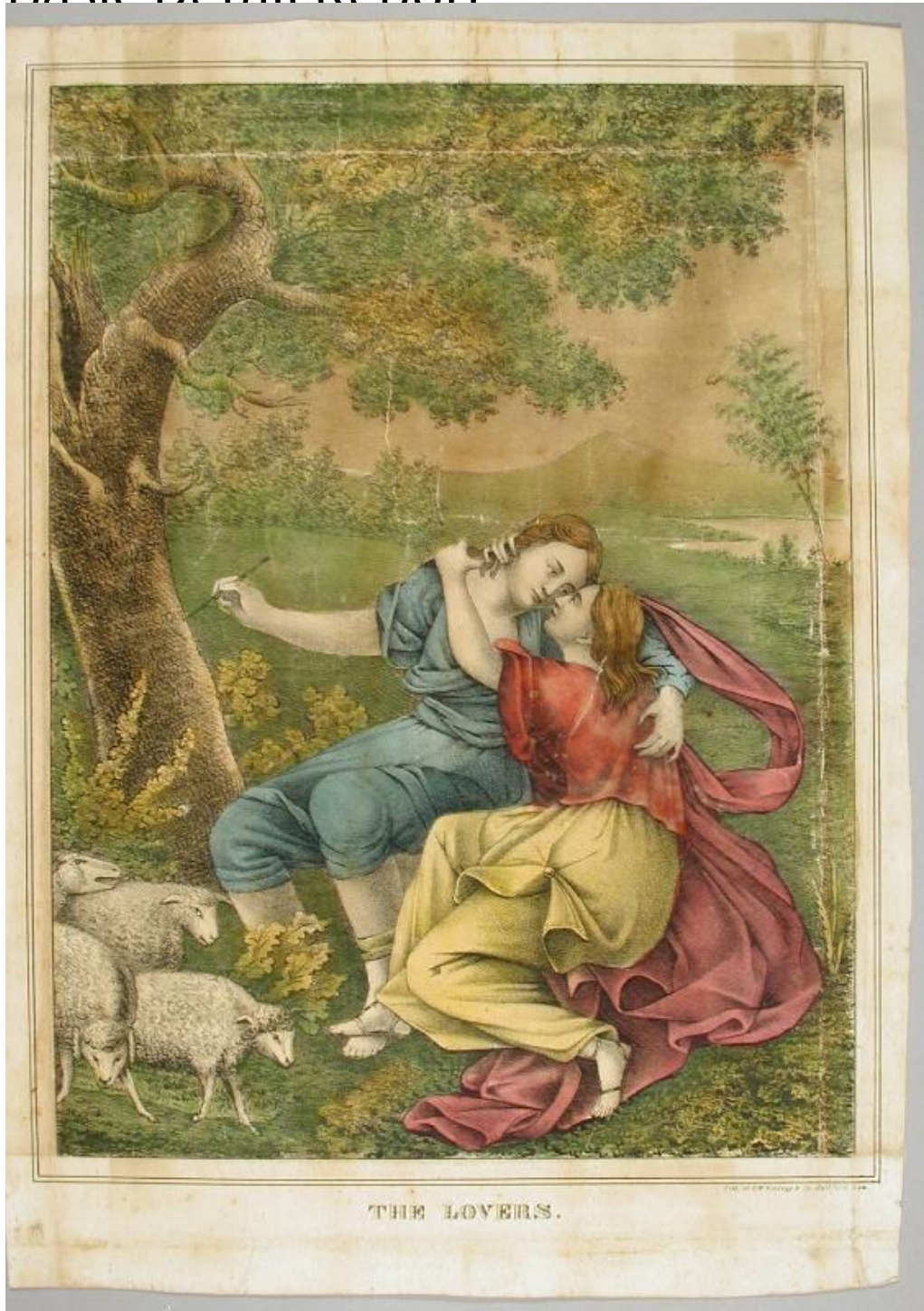


# Basic Detail Report



**Title** The Lovers.

**Date** 1830-1840

**Primary Maker** D. W. Kellogg & Co.

**Medium** Lithography; printer's ink and watercolor on wove paper

# Basic Detail Report

Description A man and a woman are seated under a tree in a pastoral landscape.

Both wear classical dress, including sandals. The woman's arms are around the man's neck and the man's left hand rests on the woman's back. With a stylus in his right hand, he has just finished carving the name "ANGELIQUE" into the bark of a tree. Four sheep are at the left. Additional trees, bushes, a lake, and a distant mountain are in the background.

Dimensions Primary Dimensions (image height x width): 14 1/16 x 10 5/8in. (35.7 x 27cm) Sheet (height x width): 15 15/16 x 11in. (40.5 x 27.9cm)