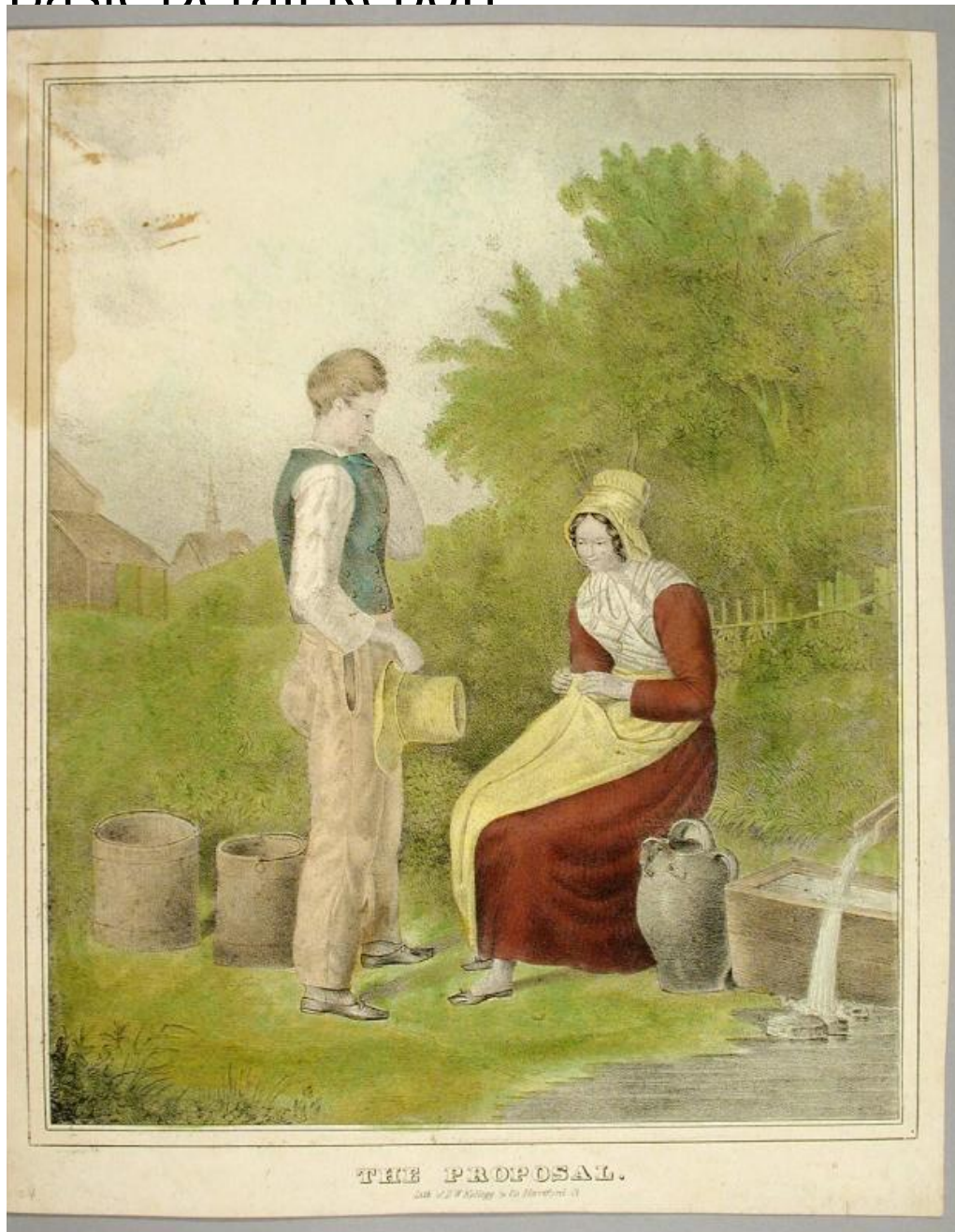


# Basic Detail Report



**Title** The Proposal.

**Date** 1830-1840

**Primary Maker** D. W. Kellogg & Co.

**Medium** Lithography; printer's ink and watercolor on wove paper

**Description** A young woman, possibly a milkmaid, is seated on a grassy bank beside a wooden water trough. She wears a bonnet, a long dress, a shawl, an

# Basic Detail Report

apron, and flat shoes or slippers. She holds a corner of her apron. Water pours from a spout into the trough and overflows onto the ground in the right foreground. A young man stands at the left. He wears a shirt, vest, trousers, shoes, and socks and holds a high straw hat in his hand. Beside the water trough is a large three-handled ceramic water jug. Two wooden buckets are behind the man. A picket fence, trees, a barn or shed, and a church with a steeple are in the background.

Dimensions Primary Dimensions (image height x width): 12 1/8 x 9 15/16in. (30.8 x 25.2cm) Sheet (height x width): 13 1/4 x 10 9/16in. (33.7 x 26.8cm)