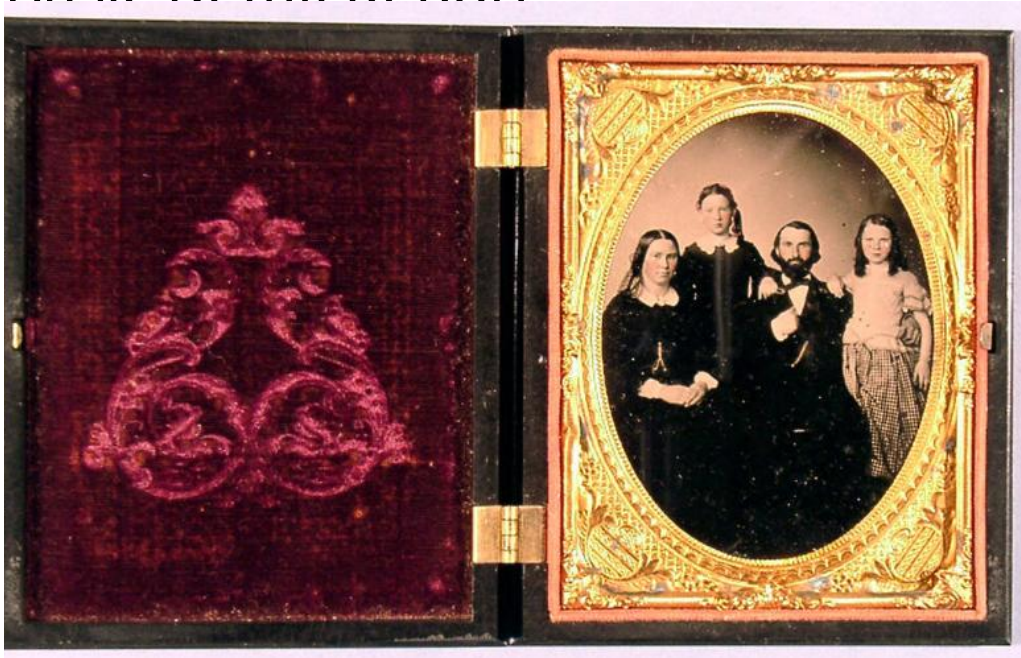


# Basic Detail Report



## Title Union Case with Oval Cartouche Design Containing a Portrait of an Unidentified Family

Date about 1860

Primary Maker Samuel Peck

Medium Photography and thermoplastic case; tintype, watercolor and gold on lacquered iron in metal holder, mounted in molded plastic with printed paper lining, velvet pad, glass cover sheet and metal hinges and clasp

Description Image: Oval studio portrait of a man, a woman, and two girls. The man has a beard and mustache and wears a dark suit. The woman wears a dark dress and jewelry, including a brooch. She wears a hair net or snood. The older girl wears a dress with a lace collar and earrings. The younger girl wears a blouse with applied trim and a checked skirt. Case: Front and back covers are stamped with a conventional design consisting of an oval surrounded by scrolls and stylized leaves. Identical abstract decorative motifs, perhaps meant to suggest

# Basic Detail Report

stylized flowers, are at each corner. The border contains a design resembling

netting. Pad: Deep purple velvet stamped with a triangular design of stylized

leaves and flowers. Metal mount: Elaborate design includes diaper pattern,

scallops, stylized leaves.

Dimensions Primary Dimensions (exterior height x width x depth):  $4 \frac{7}{8} \times 3 \frac{15}{16}$

$\times \frac{7}{8}$ in. (12.4 x 10 x 2.2cm)