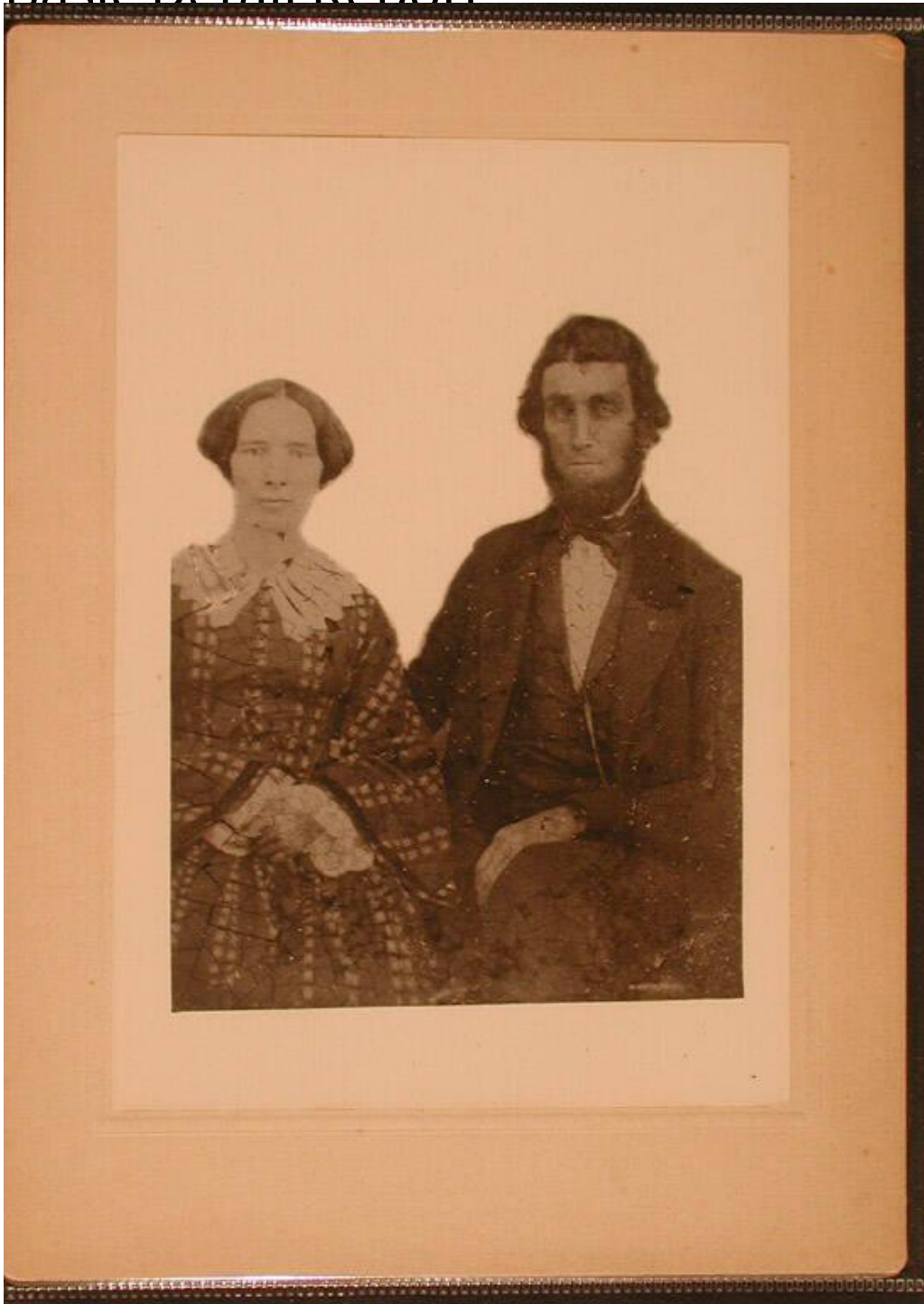


# Basic Detail Report



**Title** Charlana Cady Sheldon and David Holmes Sheldon

**Date** about 1900

**Primary Maker** Unknown

**Medium** Photography; gelatin silver print on paper on cardboard mount

# Basic Detail Report

Description Three-quarter-length studio portrait of a woman and a man. The

woman is seated on the left and wears a dress with a lace collar and cuffs. The

man is seated on the right and wears a coat, vest, shirt, and tie. He also has a

watchchain and a small pin on his lapel. He has a beard and sideburns.

Dimensions Primary Dimensions (image height x width): 4 x 3 1/4in. (10.2 x 8.3

cm) Sheet (height x width): 5 9/16 x 3 7/8in. (14.1 x 9.8cm) Mount (height x

width): 7 1/8 x 5 1/4in. (18.1 x 13.3cm)