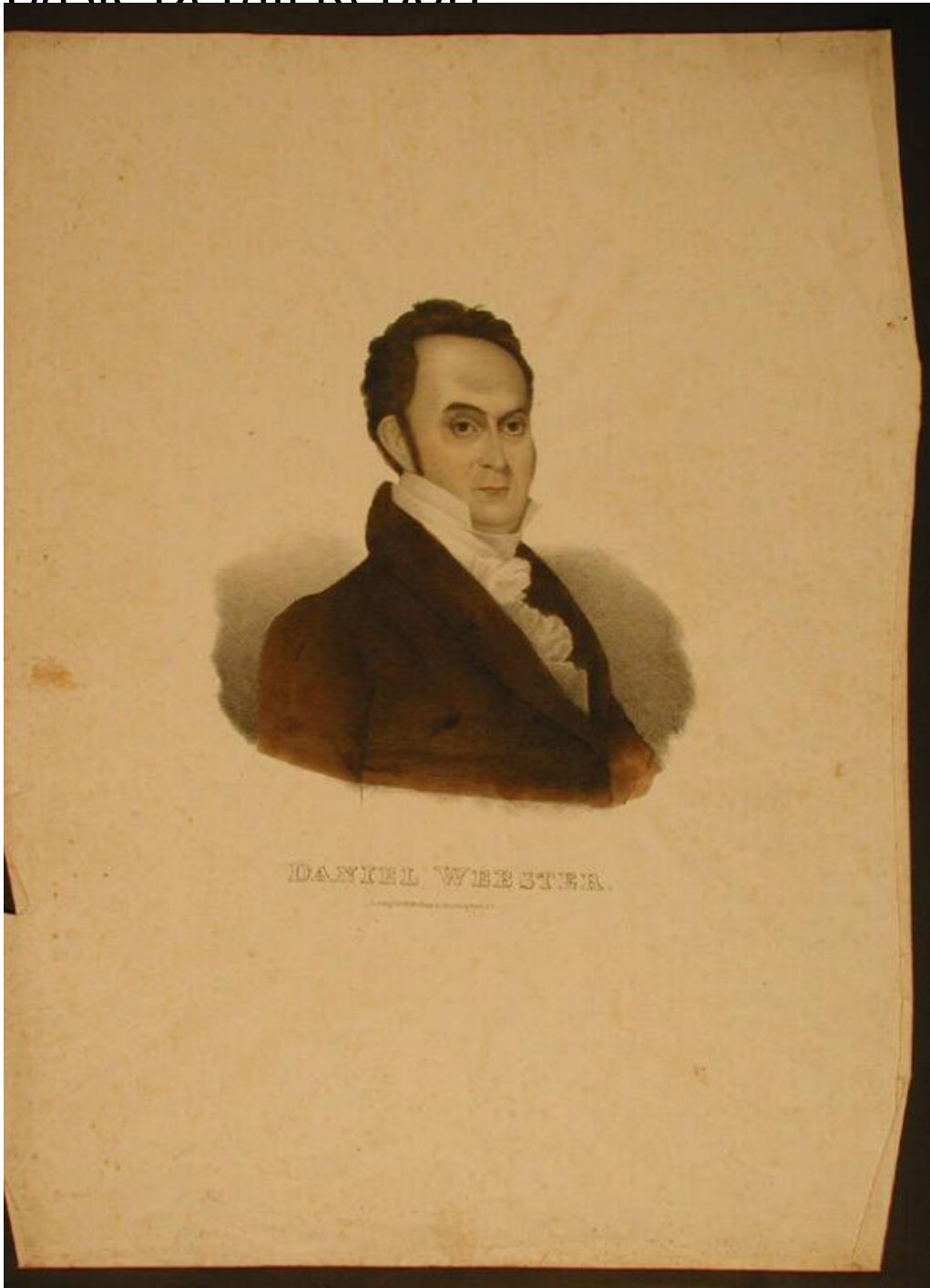


Basic Detail Report



Title Daniel Webster.

Date 1830-1840

Primary Maker D. W. Kellogg & Co.

Medium Lithography; printer's ink and watercolor on wove paper

Basic Detail Report

Description Half-length portrait of a man wearing a coat, a shirt, and a jabot. He has sideburns, and he faces to the right.

Dimensions Primary Dimensions (image height x width): 7 7/8 x 7 3/8in. (20 x 18.7 cm) Sheet (height x width): 18 15/16 x 14in. (48.1 x 35.6cm)