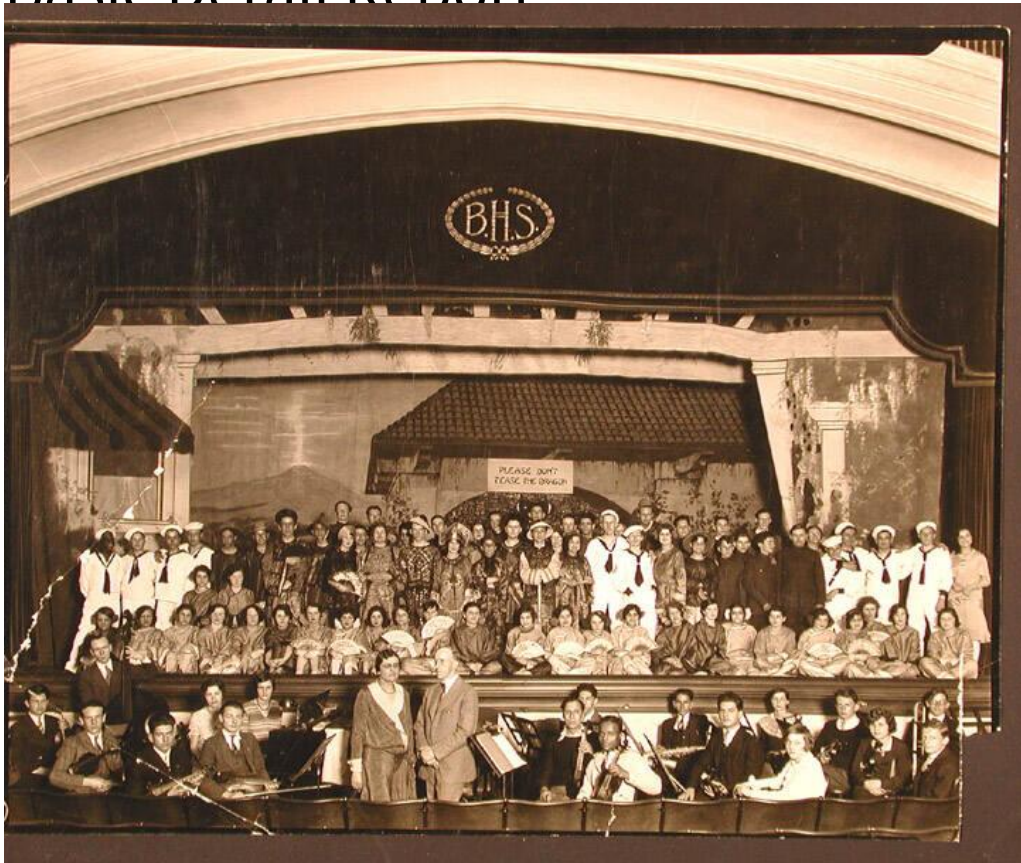


# Basic Detail Report



## Title "Don't Tease the Dragon"

Date 1926-1940

Primary Maker Unknown

Medium Photography; gelatin silver print on paper

Description The cast and orchestra of a school play are assembled on the stage and in the orchestra pit of a high school auditorium. Some of the actors and actresses wear oriental costumes. Some of the girls hold fans. Some of the boys are wearing sailors' uniforms. Musicians wear suits and neckties. Girls wear dresses. One girl's dress has a lace collar. One girl, and a woman who stands in the foreground, wear jewelry, including necklaces and earrings. One boy wears eyeglasses. Some students appear to be African-American. Instruments include violins and a trombone. The set represents the exterior of a building with a tiled

# Basic Detail Report

roof. A sign reads: "PLEASE DON'T / TEASE THE DRAGON." A mountain is painted on the backdrop. Above the stage, the letters "B.H.S. [Bulkeley High School]" are surrounded by a wreath.

Dimensions Primary Dimensions (image height x width): 7 7/8 x 10in. (20 x 25.4 cm) Sheet (height x width): 8 1/8 x 10in. (20.6 x 25.4cm)