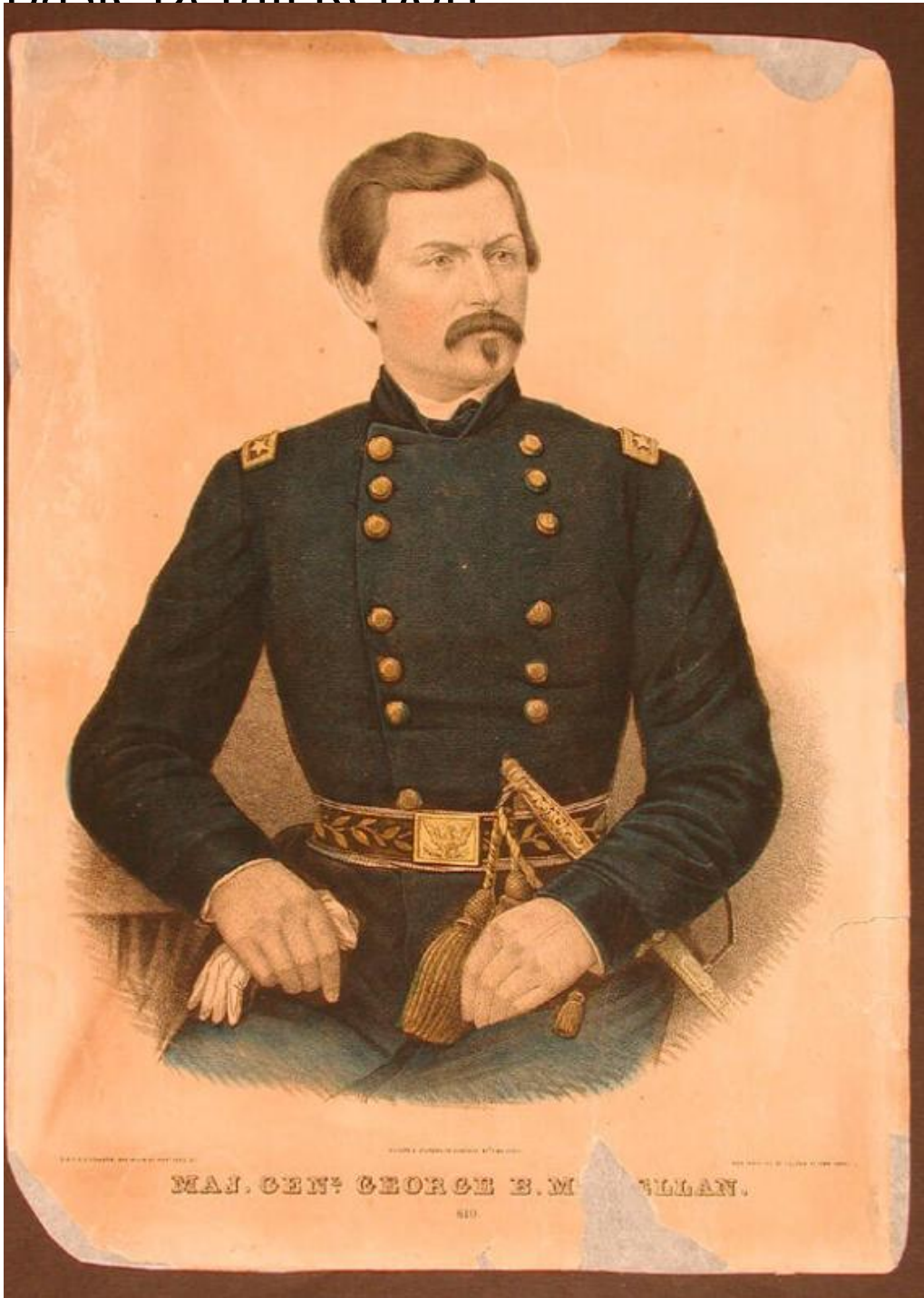


Basic Detail Report



Title Maj. Genl. George B. McClellan.

Date 1861-1865

Primary Maker E.B. & E.C. Kellogg

Medium Lithography; printer's ink and watercolor on wove paper

Basic Detail Report

Description Three-quarter-length portrait of a seated man in military uniform

with epaulets and a belt with an eagle on it. He has a mustache. He holds a glove

in one hand and a sword in its scabbard in the other. The sword has tassels on it.

Dimensions Primary Dimensions (image height x width): 11 3/16 x 8 3/4in. (28.4 x

22.2cm) Sheet (height x width): 14 1/8 x 10 1/4in. (35.9 x 26cm)