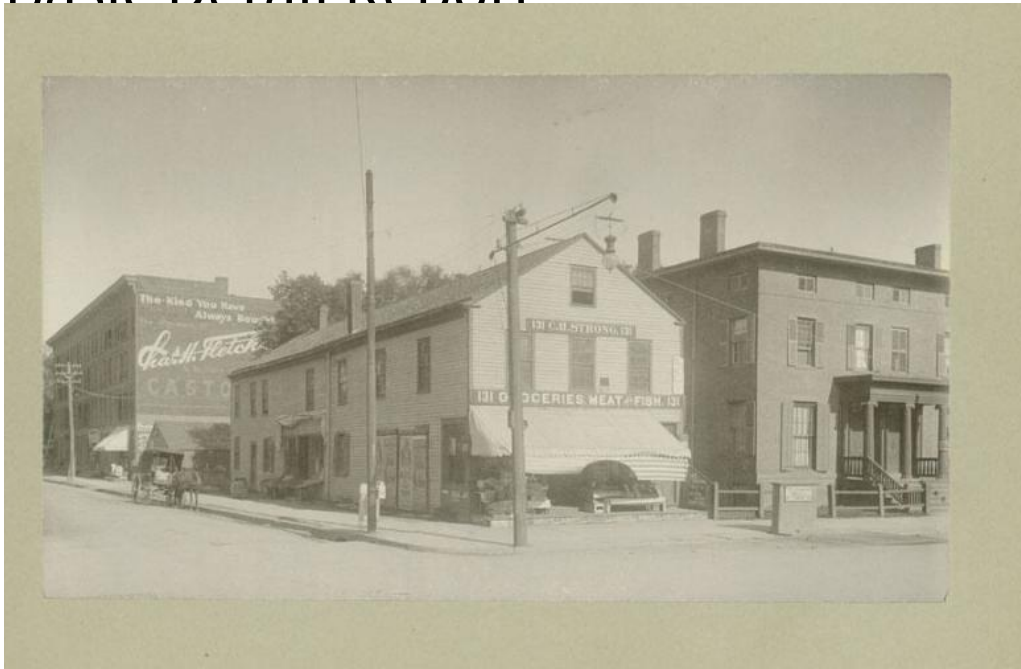


Basic Detail Report



Title Horace Seymour Store, Northwest Corner of Main Street, Hartford

Date 1900

Primary Maker F. D. Berry

Medium Photography; gelatin silver print on paper mounted on card

Description A frame commercial building with an awning is located at the corner of a city street. Signs read: "131 C.H. STRONG. 131" "131 G[R]OCERIES, MEAT AND FISH. 131" "SUNLIGHT / SOAP". Merchandise is displayed in boxes and baskets in front of the building. A wooden structure on the paved sidewalk in front of the building has a sign that reads: "THE STANDARD / SCALE / PITTSBURG, PA." Theatrical posters are posted on the side of the building. These read, in part: "Julia / Marlowe" "The / King's / [illegible]" Utility poles and trolley poles line the street. A gas street light operated by a pulley hangs from a pole at the corner. There appears to be a mailbox on a nearby pole. A house with louvered shutters, a porch supported by Ionic columns, and a rail fence is at the

Basic Detail Report

right. A horse-drawn vehicle is in the street at the left. A painted sign on the side of a brick commercial building reads: "The Kind You Have / Always Bought / The Signature of / W [?] H. Flet[cher?] / Is on Every ... / CASTO..."

Dimensions Primary Dimensions (image height x width): 4 1/4 x 7 3/8in. (10.8 x 18.7cm) Sheet (height x width): 7 x 10in. (17.8 x 25.4cm)