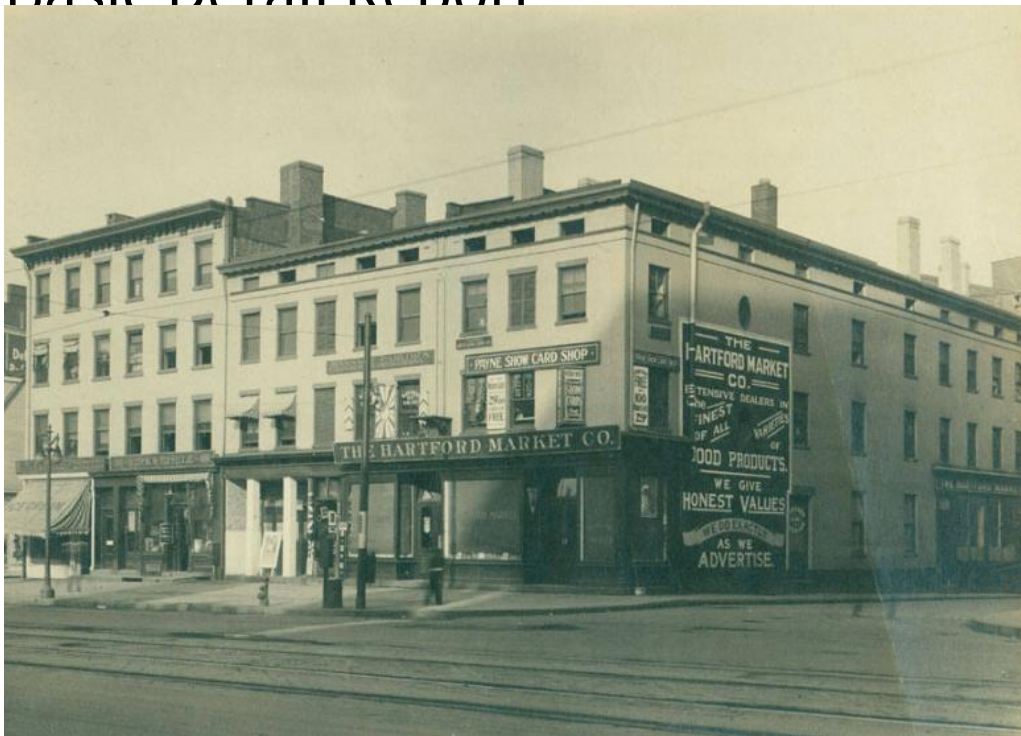


Basic Detail Report



Title The Hartford Market Co. & Other Businesses at the Corner of Main Street and Mulberry Streets, Hartford

Date 1910-1920

Primary Maker Unknown

Medium Photography; gelatin silver print on paper

Description Brick commercial building on a city street corner. A fire hydrant, an electric street light and a trolley pole are on the paved sidewalk. Trolley tracks are in the road. A man on the sidewalk is blurred from movement. Signs read:

"Hartford Candy Kitchen / Fine Chocolats / and / Bon Bons" "Ice Cream"

"Leonards Confectionery" "605- Kirk & Eisele -605" "Massage Parlors / Corns and Bunions Carefully Removed" "Hartford / Artificial Limb. Co." "Payne Show Card Shop" "Get You / Name Cards / Printed Here / 29 cts per / 100" "The Hartford Market Co." "Barber / 609 / Shop" A striped pole indicates the location of the

Basic Detail Report

barbershop. Theatrical posters at the far left advertise: "Little / Lost / Sister /

Polis / Week of / June 19."

Dimensions Primary Dimensions (image height x width): 4 5/8 x 6 5/8in. (11.7 x

16.8cm)