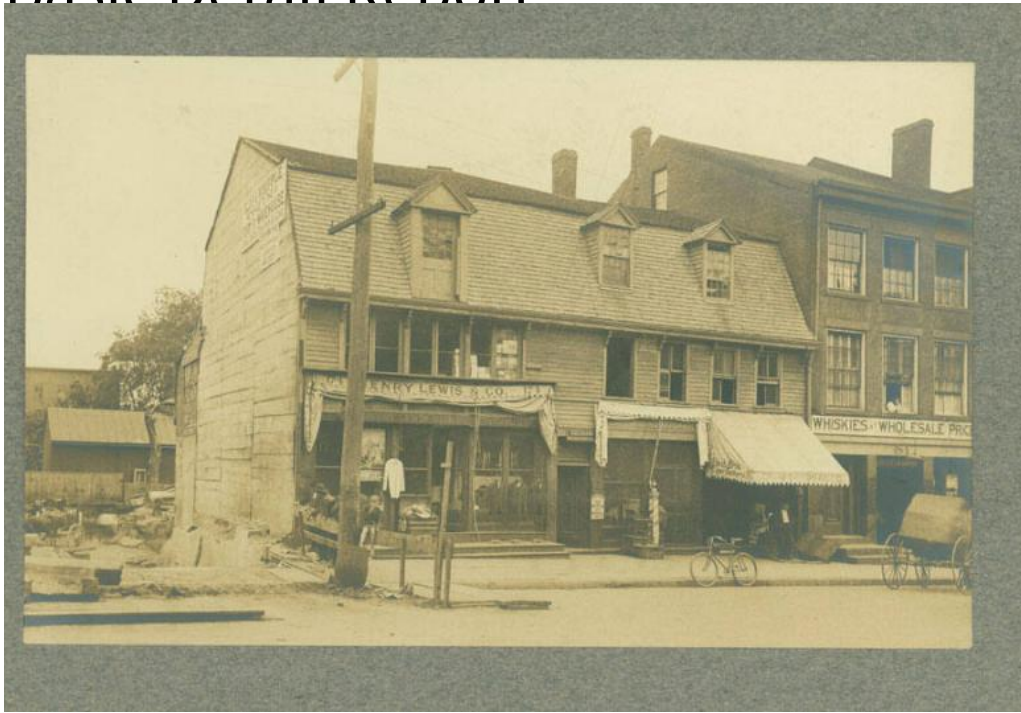


# Basic Detail Report



**Title Henry Lewis & Company, and Other Businesses at 174 State**

**Street, Hartford**

Date about 1895

Primary Maker Unknown

Medium Photography; albumen print on paper on card

Description Frame commercial building in dilapidated condition has a gambrel roof, dormers, awnings and signs that read: "174- Henry Lewis & Co. -174"

"Henry Lewis Merchant Tailor" "Table Board / Rooms with or without Board"

"Shaving / 10 cts / Hair Cutting 15 cts / Shampooing / 15 cts." "Ehret Bros. / Cigar

Factory." "Whiskies at Wholesale Pric[es]" "John J. D. Callahan." Merchandise

displayed in shop window includes coats and suspenders. Hats are in a trunk on

the steps. A theatrical poster reads: "Barnum & Bailey / Greatest Show on Earth /

[Hart]ford July 3" Men and a barefoot boy stand and sit near a board fence

nearby. A construction site is at the left. A barrel is near a utility pole. A

# Basic Detail Report

shoeshine chair is on the sidewalk near a striped pole indicating the location of the barber shop. A bicycle and a horsedrawn carriage are at the right. A woman looks out the window of a brick building at the far right. Curtains and interior louvered shutters are visible at some windows. A sign at the left reads: "Olds & Whipple / Removed to their / Ferry St. Warehouse/ during construction of their new building".

Dimensions Primary Dimensions (image height x width): 4 5/8 x 7 1/2in. (11.8 x 19.1cm) Sheet (height x width): 7 x 9 11/16in. (17.8 x 24.6cm)