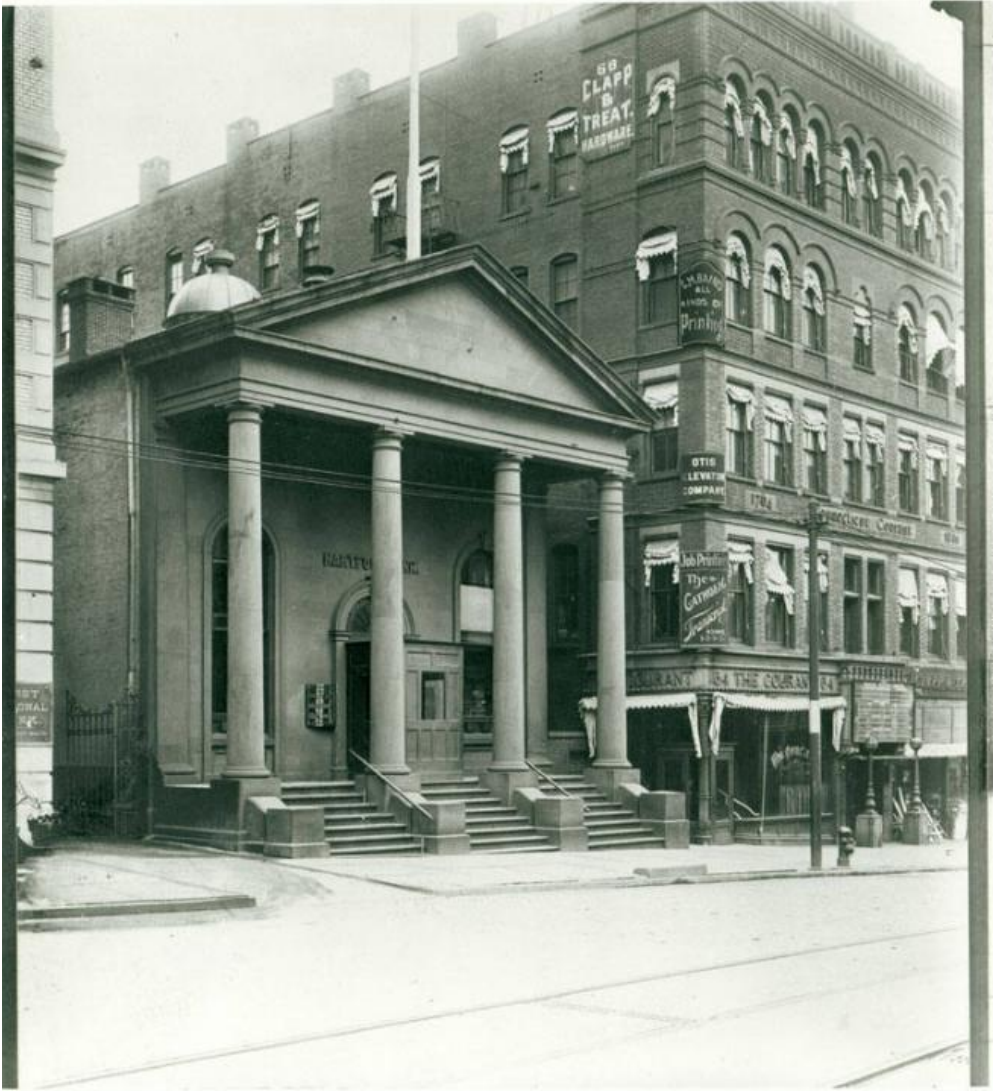


# Basic Detail Report



**Title** The Hartford Bank and Courant Building, State Street, Hartford

**Date** 1910-1913

**Primary Maker** Unknown

**Medium** Photography; gelatin silver print on paper

**Description** Stone commercial building with four columns and pediment. Door with half circle pediment, two windows on either side. Flagpole visible on roof.

Doorway has entrance built out from it. Sign next to door, "HARTFORD National BANK". Five story commercial brick building at right is the Hartford Courant

# Basic Detail Report

building. Windows, some arched, most with awnings. Signs on building, "68 /

CLAPP / & / TREAT. / HARDWARE" ; "C.M.GAINES / ALL / KINDS OF / Printing" ;

"OTIS / ELEVATOR / COMPANY." ; "Job Printing / The / CATHOLIC / Transcript /

ROOMS / 1-2-3-4" ; "Connecticut Courant" Utility poles and wires, fire hydrant on

sidewalk, trolley track in street. Iron gates at alleyway on left.

Dimensions Primary Dimensions (image height x width): 8 1/8 x 7 5/8in. (20.6 x

19.4cm) Sheet (height x width): 10 x 8 1/8in. (25.4 x 20.6cm)