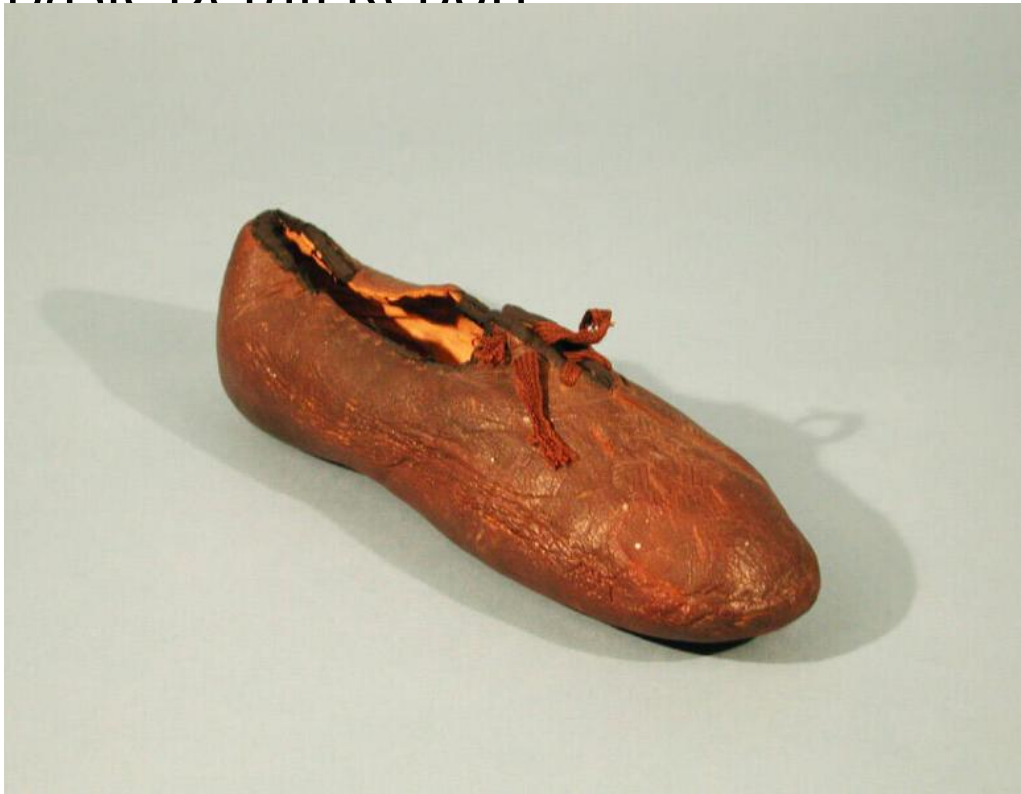


Basic Detail Report



Title Woman's Overshoe

Date about 1825-1855

Primary Maker Hayward Rubber Company

Medium Thick rubber, lined with hand-stitched leather, cotton and wool, bound with silk tape

Description Woman's overshoe, made of thick, dark rubber, with a leather lining in the heel and napped fabric (probably cotton and wool) in the forepart. The slit vamp has three pairs of eyelets for lacing a shoe string. (Currently, there is a modern plaited brown cotton tape laced through the holes.) The throatline and slit are bound with black silk tape. The overshoe has a rounded toe; the instep is impressed with a four-branched, snowflake-like design. The sock lining is a layer of leather overlaid with plain-woven white cotton. There is no separate sole.

Basic Detail Report

Dimensions Primary Dimensions (height x width x length): 2 1/2 x 3 1/8 x 8 3/4in.

(6.4 x 7.9 x 22.2cm)